

## EPA: Lebanon joins the Enlarged Partial Agreement on Cultural Routes of the Council of Europe

### Lebanon, the 35th Member State of the Enlarged Partial Agreement On the Cultural Routes of the Council of Europe

The Enlarged Partial Agreement on Cultural Routes of the Council of Europe (EPA) is pleased to welcome the Republic of Lebanon as a new EPA member State.

On 15 February, HE Mr. Walid NASSAR, Minister of Tourism, informed HE Mrs. Marija PEJČINOVIĆ BURIĆ, Secretary General of the Council of Europe, of the decision of the Republic of Lebanon to accede to the EPA as of 1 January 2022.

The Lebanese Council of Ministers in their meeting on February 10, 2022 have approved the EPA membership in accordance with the accession letter of the Ministry of Tourism of the Republic of Lebanon dated 15 November, 2021 to the Enlarged Partial Agreement on Cultural Routes of the Council of Europe (EPA). On February 18, 2022 ,During the International Conference on the Cultural Routes of the Council of Europe Crossing Italy: officially announced Lebanon , **the 35 Member State of the Enlarged Partial Agreement on Cultural Routes of the Council of Europe.**

The accession follows a Committee of Ministers' decision on the request of Lebanon to become a member of the EPA. An Enlarged Partial Agreement, the EPA is open to non-Council of Europe member States in accordance with Resolution CM/Res(2013)66 confirming the establishment of the Enlarged Partial Agreement on Cultural Routes (EPA). Lebanon becomes the 35th member State of the EPA.



First Tourism Conference for Jbeil District  
Jbeil District Sustainable Tourism Vision





## 45 CULTURAL ROUTES OF THE COUNCIL OF EUROPE



Santiago de Compostela Pilgrim Routes



The Hansa



Viking Route



Via Francigena



Routes of El legado andalusí



Phoenicians' Route



Iron Route in the Pyrenees



European Mozart Ways



European Route of Jewish Heritage



Saint Martin of Tours Route



Cluniac Sites in Europe



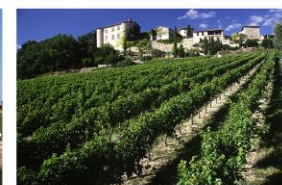
Routes of the Olive Tree



VIA REGIA



TRANSROMANICA



Iter Vitis Route



European Route of Cistercian Abbeys



European Cemeteries Route



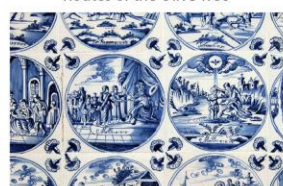
Prehistoric Rock Art Trails



European Route of Historic Thermal Towns



Route of Saint Olav Ways



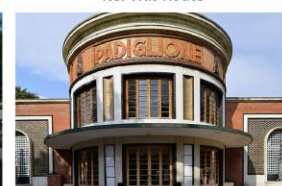
European Route of Ceramics



European Route of Megalithic Culture



Huguenot and Waldensian Trail



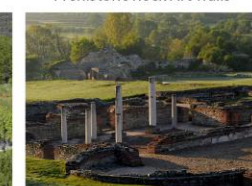
ATRIUM



Réseau Art Nouveau Network



Via Habsburg



Roman Emperors and Danube Wine Route



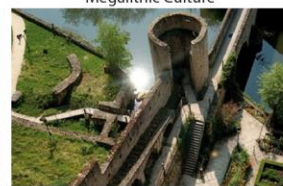
European Routes of Emperor Charles V



Destination Napoleon



In the Footsteps of Robert Louis Stevenson



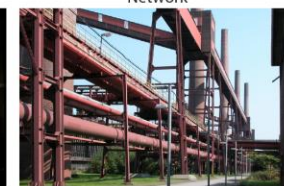
Fortified Towns of the Grande Region



Impressionisms Routes



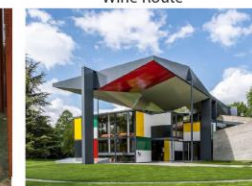
Via Charlemagne



European Route of Industrial Heritage



Iron Curtain Trail



Le Corbusier Destinations: Architectural Promenade



Liberation Route Europe



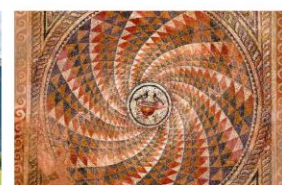
Cyril and Methodius Route



European Route of Historic Gardens



Via Romea Germanica



Aeneas Route



Alvar Aalto Route



Routes of Reformation



European Route d'Artagnan



Iron Age Danube Route



**Lebanon is currently crossed by 3 “Cultural Routes of the Council of Europe”: the Phoenicians’ Route, the Routes of El Llegado Andalusí, the Routes of the Olive Tree and soon will join the Wine Route.**

**THE PHOENICIANS’ ROUTE:** It refers to the connection of the major nautical routes used by the Phoenicians, since the 12th century BC, as essential routes for trade and cultural communication in the Mediterranean. Through these routes, the Phoenicians - genial sailors and merchants - and other great Mediterranean civilizations contributed to the creation of a "koiné", a Mediterranean cultural community, producing an intense exchange of manufactured articles, people and ideas.

**ROUTES OF EL LEGADO ANDALUSI:** In the 8th century, the Iberian Peninsula saw the arrival of Arabs and Berbers who mixed with the Roman-Visigoth inhabitants, engendering what was known as al-Andalus. This successful medieval Muslim civilisation extended, at its peak, to most of what is today Spain and Portugal, until its downfall in the late 15th century.

**ROUTES OF THE OLIVE TREE:** The presence of the olive tree has marked not only the landscape but also the everyday lives of the Mediterranean peoples. As a mythical and sacred tree, it is associated with their rites and customs and has influenced their lifestyles, creating a specific ancient civilisation, the "Olive Tree Civilization": the Routes of the Olive Tree follow in the footsteps of this civilization, from Greece towards the Euro-Mediterranean countries.

**ITER VITIS ROUTE (THE WINE ROUTE):** The culture of the vine, winemaking and viticultural landscapes are an important part of European and Mediterranean food culture. Since the domestication of the vine, several thousand years BC, its evolution and spread has been considered a great human achievement, which shaped Europe's landscapes, both in terms of its territory and its people.



## Cultural Tourism Roadmap for Lebanon- CTRL Lebanese Pavilion- Expo 2020 Dubai- January 16, 2022

Presented by Dr. Rachid Chamoun, Director LAU-LCF, Honorary President of the Phoenicians' Route

Advisor to the Lebanese Ministry of Tourism representing Lebanon to the EPA -The Cultural Routes of the Council of Europe

Our collaboration with the ministry started on the occasion of the Ministry of Tourism's launch of the "Winter Tourism package 2021-2022" at the Grand Serail on the 4th of November 2021. His Excellency, Minister of Tourism Eng. Walid Nassar, presented the Ministry's Action Plan, encompassing his vision and aspirations for the tourism reality in Lebanon for a short, medium and long-term plan. The action plan roadmap highlights reactivating agreements with a network of National and International Tourism Organizations, specifically the World Tourism Organization (UNWTO), the European Institute of Cultural Routes of the Council of Europe, and La Rotta dei Fenici"



**SMART WAYS LEBANON BY THE PHOENICIANS' ROUTE**

Lebanon Network of Historical Cities by the Phoenicians' Route  
Presented by Dr. Rachid Chamoun, Director, LAU-LCF  
Honorary President of the Confederation of The Phoenicians' Route  
<http://lcf.lau.edu.lb/contact/> <https://fenici.net/en/scientific-committee/>

Albania Belgium Italy Spain France Lebanon Tunisia Greece Croatia Malta Cyprus Governorate of Jericho



### Tourism Panel

Promoting cultural tourism, sustainable tourism  
medical tourism, and wine industry in Lebanon



**Dr. Rachid Chamoun**  
Ph.D. in Urban Studies - Expert in Cultural Tourism  
Advisor to the Lebanese Ministry Of Tourism



**Dr. Mohammad Knio**  
Ph.D. Economics- Expert in  
Sustainability Strategies.



**Dr. Viana Hassan**  
Ph.D. Tourism and Cultural Management  
Expert in Medical Tourism



**Mr. Antoine Char**  
AKA antoineandthewines  
Certified Wine Consultant

Sunday, January 16th, 2022, at 6:45 pm  
Business & Innovation Space at Lebanon Pavilion

LEBANON EXPO 2020 DUBAI antworl

وزارة السياحة اللبنانية  
MINISTÈRE LIBANAIS DU TOURISME  
LEBANESE MINISTRY OF TOURISM



## Intercultural Forum Cultural Tourism Roadmap For Lebanon

### Smart Ways Lebanon by the Phoenicians' Route

Lebanese Pavilion - Expo 2020 Dubai- March 4-11, 2022

The Lebanese American University in collaboration with the Lebanese Ministry of Tourism have launched the “Intercultural Forum on Cultural Tourism for Lebanon” under the patronage of His Excellency, Minister of Tourism Eng. Walid Nassar to celebrate Lebanon’s accession to the Enlarged Partial Agreement, into the Cultural Routes of the Council of Europe. Together with our international partners and member states of the European Institute of Cultural Routes, [Council of Europe](#), and [“La Rotta dei Fenici”](#).





Cultural route  
of the Council of Europe  
Itinéraire culturel  
du Conseil de l'Europe



## Euro Mediterranean Intercultural Dialogue Forum

Celebrating

Lebanon, the 35th Member State of the Enlarged Partial Agreement

On the Cultural Routes of the Council of Europe

April 20-23, 2022

Under the Patronage of His Excellency, President of the Republic General Michel Aoun

Represented by His Excellency Minister of Tourism Eng. Walid Nassar



First Tourism Conference for Jbeil District  
Jbeil District Sustainable Tourism Vision





Cultural route  
of the Council of Europe  
Itinéraire culturel  
du Conseil de l'Europe



The Forum will focus on enhancing the joint mission of the Lebanese Ministry of Tourism and the Lebanese American University to disseminate knowledge about the history of Lebanon and will seek to sustain Lebanon's intercultural dialogue and connectivity with the confederation of the Euro-Mediterranean cities to promote Lebanon's Cultural Tourism industry towards boosting its Economy.

### The program shall include the following activities:

- Celebration of Lebanon, the 35th Member State of the Enlarged Partial Agreement on Cultural Routes of the Council of Europe,
- Announcement of the Intercultural Dialogue Academy for Lebanon,
- The inauguration of the Phoenicians' Route Museum in the historical district of Jounieh,
- Celebrate Bkassine declaration as one of the best tourist villages in the world, as part of the initiative of the World Tourism Organization (UNWTO).



First Tourism Conference for Jbeil District  
Jbeil District Sustainable Tourism Vision







Cultural route  
of the Council of Europe  
Itinéraire culturel  
du Conseil de l'Europe



Thank you for your participation to the

Jbeil District Sustainable Tourism Vision

رؤية لسياحة مستدامة لمدينة وقضاء جبيل

And we look forward to see you at

Euro Mediterranean Intercultural Dialogue Forum- LAU Byblos, Lebanon

April 20-23, 2022

Dr. Rachid Chamoun, Director, [LAU-Louis Cardahi Foundation](#)

Board Member of [WATCH](#)



First Tourism Conference for Jbeil District  
Jbeil District Sustainable Tourism Vision

