

The Phoenicians Museum – Jounieh, Lebanon

In collaboration with the municipality of Jounieh as an active member on the Phoenicians route and in support of our sustainable cultural heritage activities.



Albania



Belgium



Italy



Spain



France



Lebanon



Tunisia



Greece



Croatia



Malta



Cyprus



Governorate of Jericho

The Phoenicians Museum – Jounieh, Lebanon

MUNICIPALITY OF JOUNIEH
PHOENICIAN ROUTE
LEBANESE AMERICAN UNIVERSITY

PHOENICIAN MUSEUM JOUNIEH LEBANON
museum | library | public activities | piazza
march 2020

maroun el-daccache architect
project philosophy

The historical palace donated by the municipality for the Phoenician museum along the ancient commercial street of Jounieh city, is defined by a typical typology of Lebanese traditional building: central hall with triple arcade in the upper floor, and commercial vaulted structure that defines the space of the ground floor.

The idea of the restoration and transformation of the existing palace into a museum, is to expose the history of the place "the typology of the existing building" as a collective memory of the city of Jounieh and its projection towards a new evolutionary cultural function for the community. In this sense, the project describes the evolutionary and speculative history that the palace has undergone with the aim of putting its particular architecture into value.

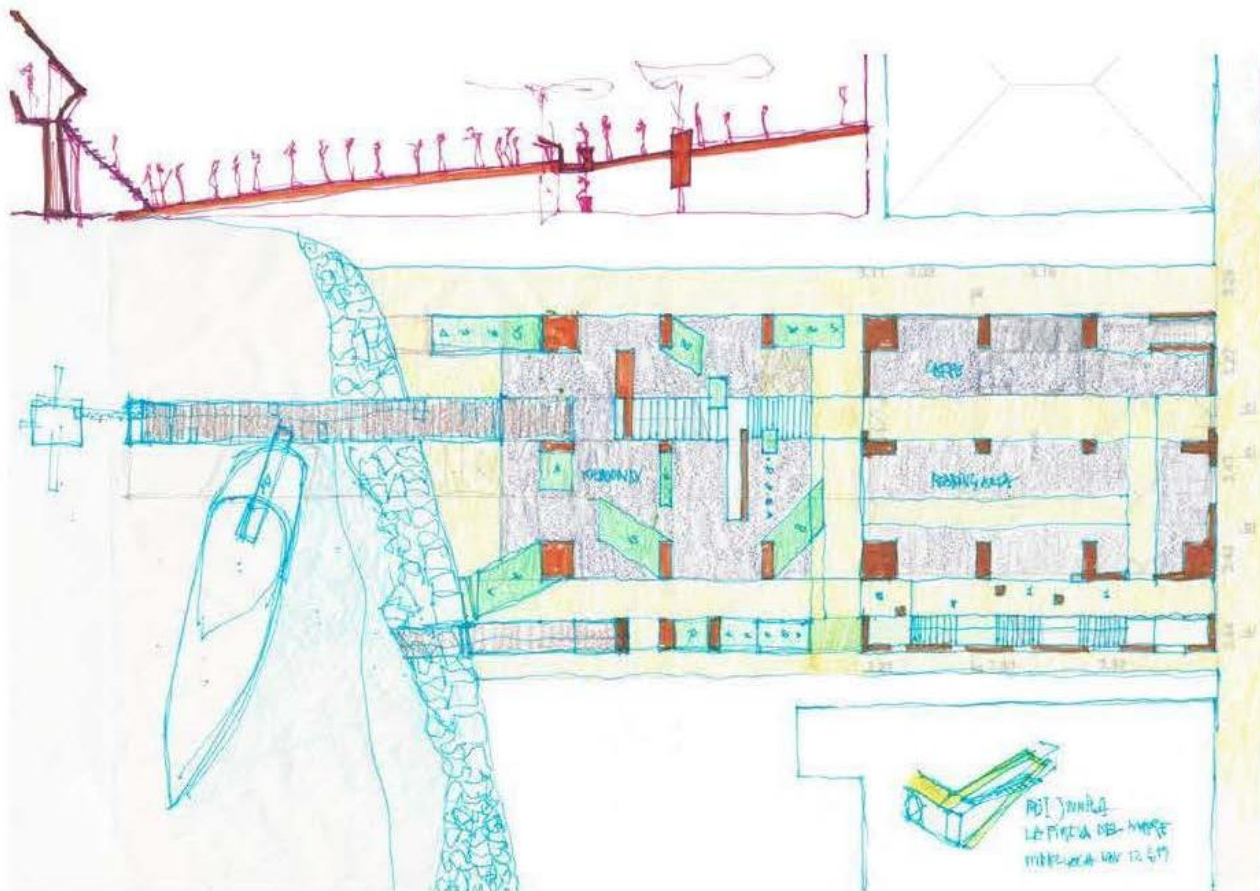
This description of the historical/architectural elements takes place through an exhibition path that connects the city "public pedestrian path" with the "inner museum path" and becomes the matrix of the museum development and the relationship between different scale and elements of the architectural project, "explore architecture."

The ground floor, represented by the huge columns and arches that serve as the core structure of the building, is transformed into an open space with extension towards a garden that opens to the sea. This space will be dedicated for a municipal reading room, café/bar... and other public activities that extend to the garden and the sea.

An external staircase, conceived as a continuity of the urban pedestrian path, leads to the upper level terrace that describes the first phase of the museum path. The opening of the terrace to the Mediterranean Sea constitutes this first relationship with the Phoenician world and gives access to the central hall of the museum.

The space of the central hall, projected to accommodate the statues and bas-reliefs, defines the generator space of the museum. In fact, from this space you can access the different rooms that exhibit the culinary and traditional objects of the Phoenician culture. A staircase/theatre for different activities, leads to the upper level that has instead been projected with architectural elements designed to expose maps and the culture of navigation of the Phoenician route.

The vertical relationship of the voids, that connect with each other, makes perceptible the dialogue between the preserved architecture of the building, exposed as an "architectural historical" value, and the architecture of the new intervention describing the contemporary space. It is a dialogue of reflection between "history and contemporaneity" to involve all generations in taking part of the museum space and public activity. It is an invitation above all to the new generation to become aware of our Mediterranean and local history in order to develop a new collective social knowledge. It is a dialogue of cultures and heterogeneous generations that could generate new spaces and ideas for our society. In fact, the museum path ends with a meditation belvedere, projected as an extension of the central hall space and conceived as a lighthouse in the middle of Jounieh bay to describe the beginning of the history of the Phoenician and Mediterranean world.



Albania



Belgium



Italy



Spain



France



Lebanon



Tunisia



Greece



Croatia



Malta

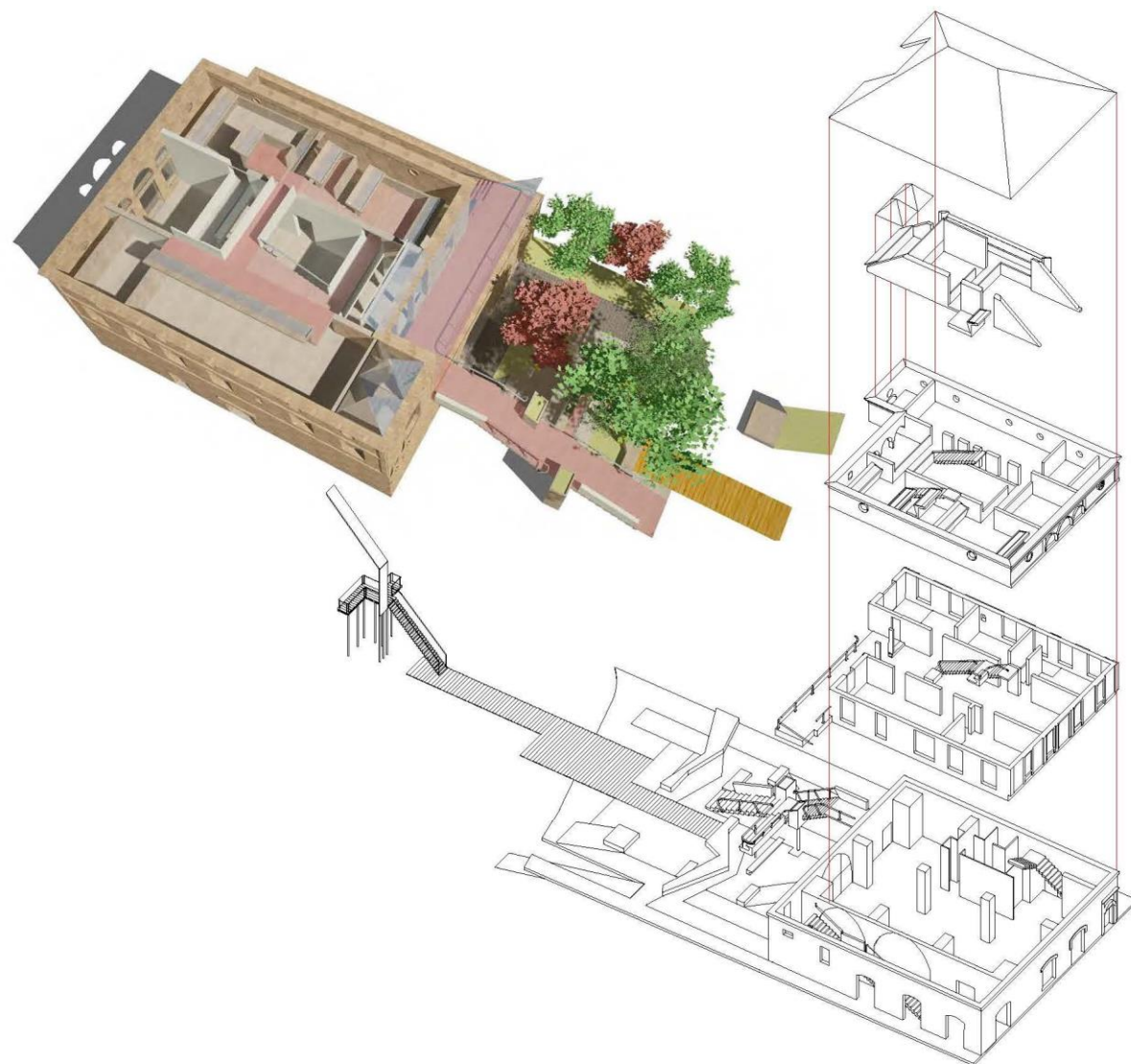


Cyprus



Governorate of Jericho

The Phoenicians Museum – Jounieh, Lebanon



Municipality of Jounieh
Phoenician Route
Lebanese American University

PHOENICIAN MUSEUM
JOUNIEH, LOT 251

architecture
A

⊕ SCHEMATIC DESIGN
general autonomy
date november 2020

revisions

GENERAL NOTES :

studio d'architettura
el-daccache architect
marwan el-daccache architect



Albania



Belgium



Italy



Spain



France



Lebanon



Tunisia



Greece



Croatia



Malta



Cyprus



Governorate of Jericho

The Phoenicians Museum – Jounieh, Lebanon



Albania



Belgium



Italy



Spain



France



Lebanon



Tunisia



Greece



Croatia



Malta

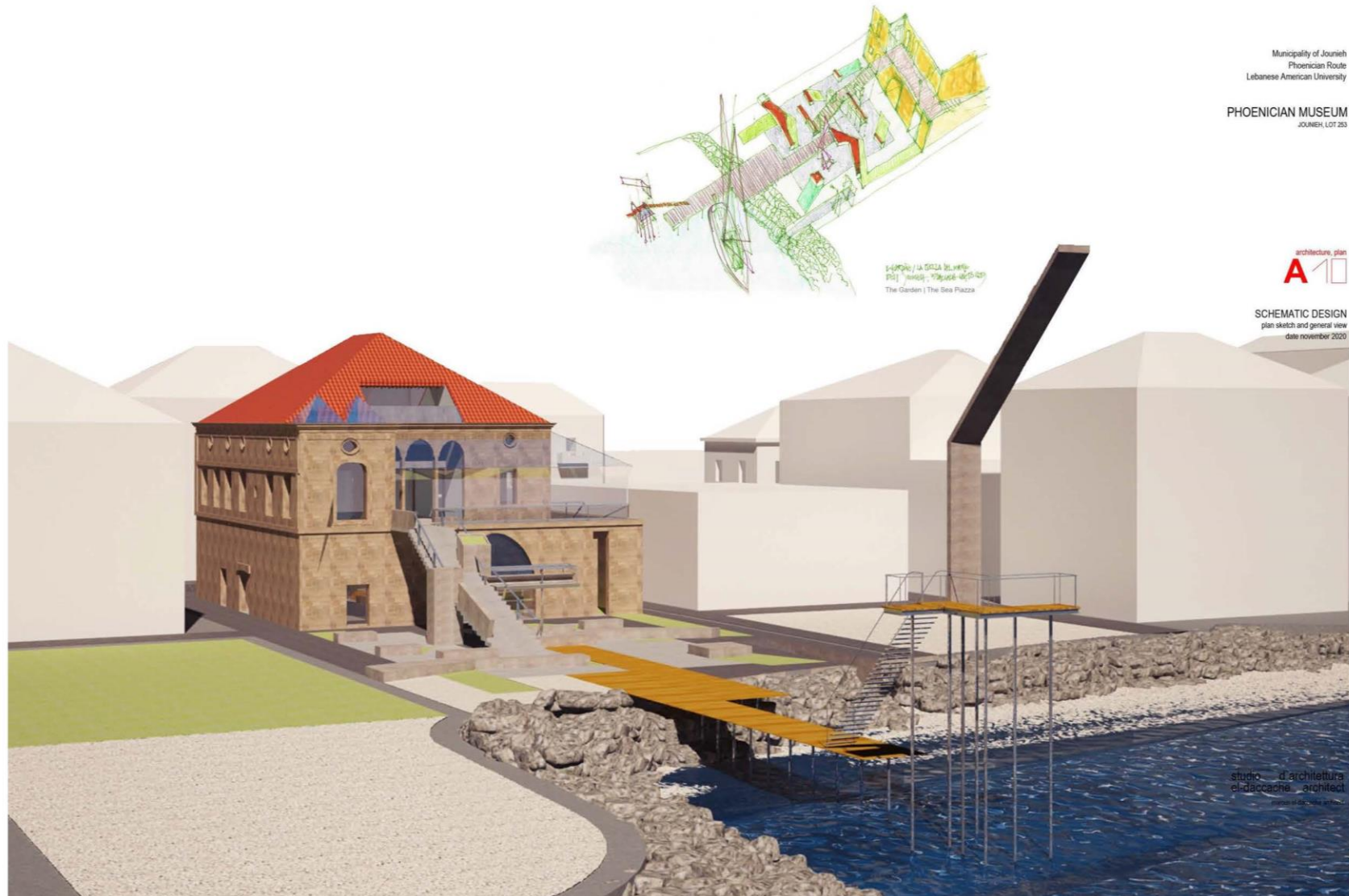


Cyprus



Governorate of Jericho

The Phoenicians Museum – Jounieh, Lebanon



Albania



Belgium



Italy



Spain



France



Lebanon



Tunisia



Greece



Croatia



Malta



Cyprus



Governorate of Jericho

The Phoenicians Museum – Jounieh, Lebanon



Albania



Belgium



Italy



Spain



France



Lebanon



Tunisia



Greece



Croatia



Malta

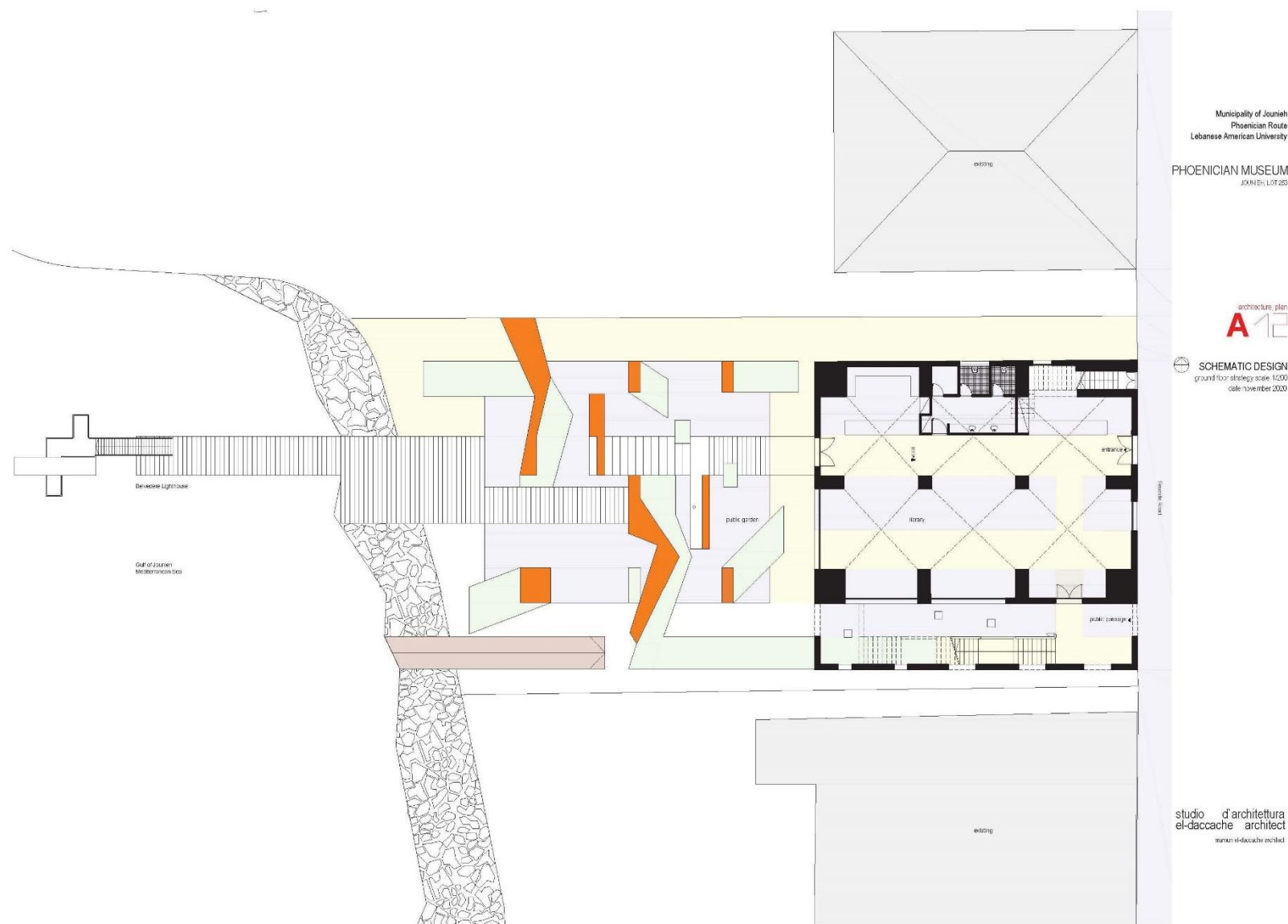


Cyprus



Governorate of Jericho

The Phoenicians Museum – Jounieh, Lebanon



Albania



Belgium



Italy



Spain



France



Lebanon



Tunisia



Greece



Croatia



Malta



Cyprus

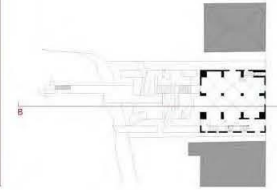


Governorate of Jericho

The Phoenicians Museum – Jounieh, Lebanon



main hall, stairs and bridge connection

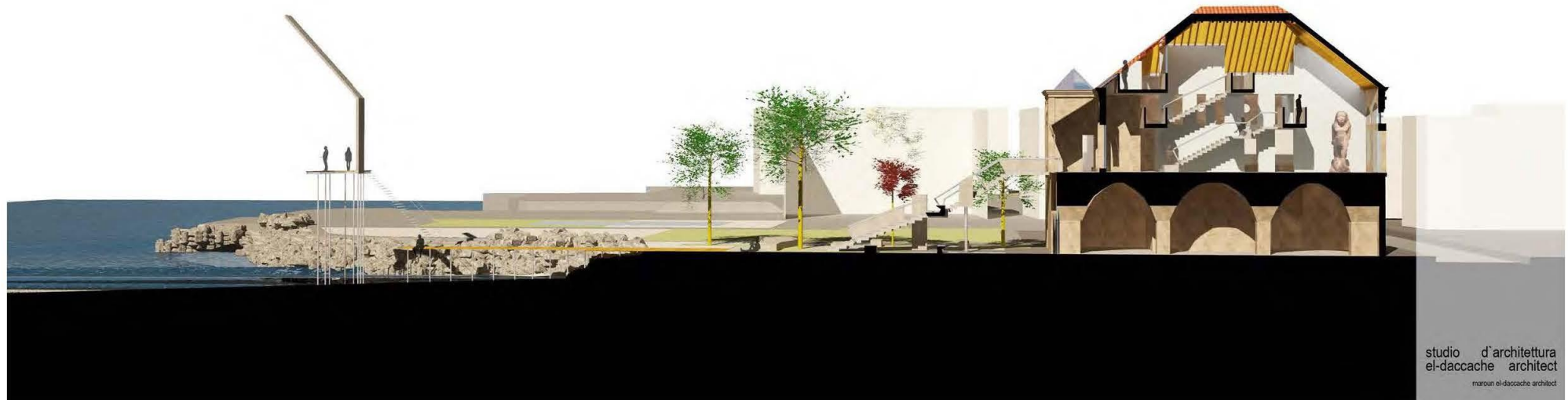


Municipality of Jounieh
Phoenician Route
Lebanese American University

PHOENICIAN MUSEUM
JOUNIEH, LOT 283



SCHEMATIC DESIGN
section BB and main hall perspective view
date november 2020



studio d'architettura
el-daccache architect
maroun el-daccache architect



Albania



Belgium



Italy



Spain



France



Lebanon



Tunisia



Greece



Croatia



Malta



Cyprus

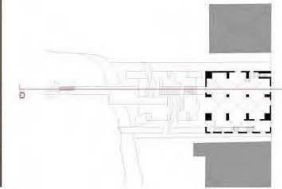


Governorate of Jericho

The Phoenicians Museum – Jounieh, Lebanon



main hall, sculpture exhibition



Municipality of Jounieh
Phoenician Route
Lebanese American University

PHOENICIAN MUSEUM
JOUNIEH, LOT 253



SCHEMATIC DESIGN
section DD and main hall perspective view
date november 2020



studio d'architettura
el-daccache architect
maroun el-daccache architect



Albania



Belgium



Italy



Spain



France



Lebanon



Tunisia



Greece



Croatia



Malta



Cyprus



Governorate of Jericho

The Phoenicians Museum – Jounieh, Lebanon



main hall entrance, gallery view

Municipality of Jounieh
Phoenician Route
Lebanese American University

PHOENICIAN MUSEUM
JOUNIEH, LOT 253

general view
A25

SCHEMATIC DESIGN
view of belvedere and gallery
date november 2020



studio d'architettura
el-daccache architect
marwan el-daccache architect



Albania



Belgium



Italy



Spain



France



Lebanon



Tunisia



Greece



Croatia



Malta



Cyprus



Governorate of Jericho

The Phoenicians Museum – Jounieh, Lebanon



Albania



Belgium



Italy



Spain



France



Lebanon



Tunisia



Greece



Croatia



Malta



Cyprus



Governorate of Jericho